

# THIN TYPE BALL VALVE

JVL



Model: JL900-Q6/C7/F/16/P/80/E1/B/W2/B3/B7

## Design Feature

- Thin design, lightweight and beautiful appearance, quick response, zero leakage
- Fire-proof, stactic-proof structure, Silica sol precision casting, safe & reliable
- The valve meets ISO5211 standard high platform design, ultra-long service life
- Bidirectional sealing, bidirectional pressure bearing, self compensation, self cleaning
- Available for medium with fiber, particles or high-viscous medium

## Model Naming Method

JL	-900	-Q6	-C7	-F	-16	-P	-80	-E1	-B	-W2	-B3	-B7
Juliang brand	Electric	Thin type ball valve	Wafer	PTFE	PN	SS304	DN	Single acting normally closed	Exd IIBT4	-20~150°C	3/2 anti-explosion solenoid valve	Anti-explosion limit switch

## Technical Parameter

DN	DN15~100mm
Nominal pressure	1.6Mpa (other pressure standard, please indicate when ordering)
Body material	WCB(C), SS304(P), SS316(R)
Sealing material	PTFE(F), PPL (PPL)
Medium temp.	W2: -20~150°C W3: -20~250°C
Connection mode	Wafer
Pneumatic actuator	JLAT series, JLAW series, Imported actuator series
Action mode	Double acting, Single acting normally closed, Single acting normally open
Electric actuator	JLA series, JLB series, Imported actuator series
Control mode	Standard switch type, Integral regulating type, Integral switch type, Field bus type

• Note: Other special sealing materials and special interface can be selected according to customers' requirements.

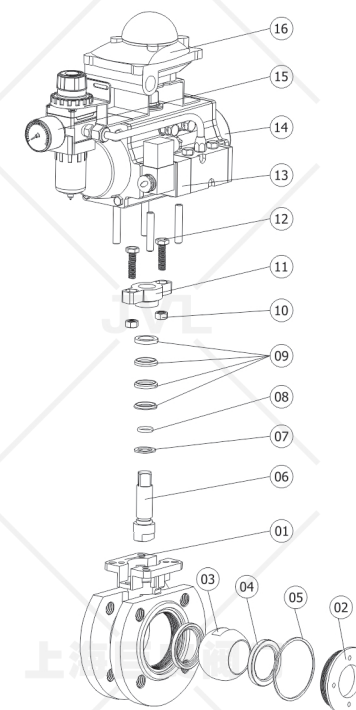
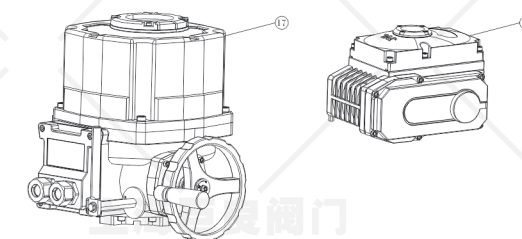
## Main component table

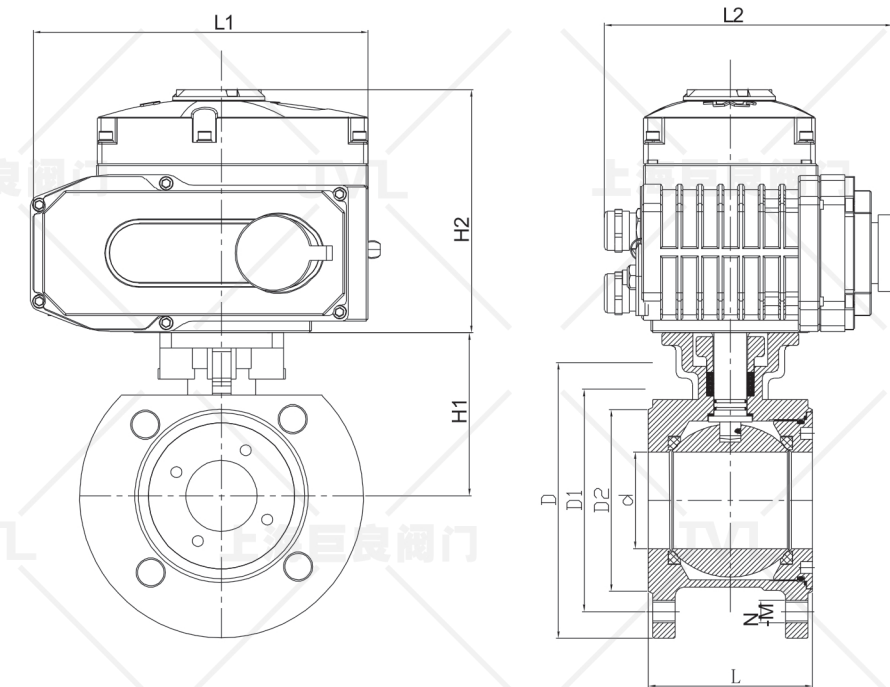
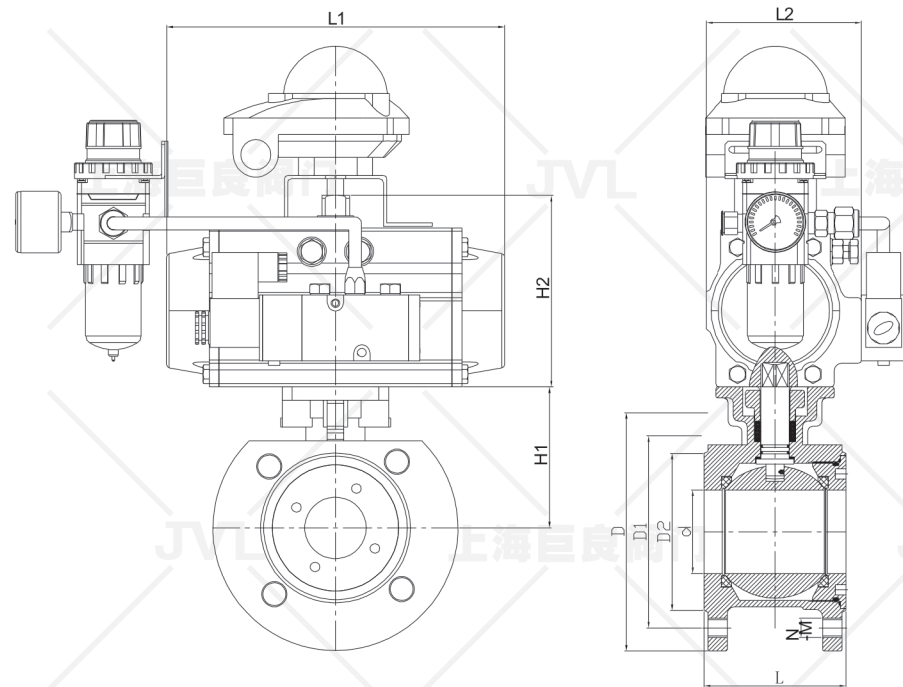
No.	Part Name	No.	Part Name
1	Valve body	11	Gland
2	Bonnet	12	Bolt
3	Ball	13	Solenoid valve
4	Valve seat	14	Pneumatic actuator
5	Sealing gasket	15	Filter pressure reducing valve
6	Stem	16	Limit switch
7	Thrust washer	17	Anti-explosion electric actuator
8	O type ring	18	Electric actuator
9	V type packing		
10	Nut		

• Note: The materials of main parts and sealing ring can be designed and selected according to the actual working conditions or customers' requirements.

## Technical Specification

Design consideration	DIN		
Design standard	DIN 3357	Wall thickness standard	ASME B16.34
Flange connection	DIN EN1092-1	Test, Inspection standard	API 598





▼ PNEUMATIC OVERALL DIMENSIONS CHART-PN16(16bar)

DN	Overall Dimension						Connection Dimension				Actuator Model
	d	L	L1	L2	H1	H2	D	D1	D2	N-M	
15	14	36	159/172	73/85	48	73/90	88	65	45	4-12	JLATD52/JLATE63
20	19	40	159/172	73/85	53	73/90	98	75	58	4-12	JLATD52/JLATE63
25	24	44	172/185	85/95	59	90/100	105	85	68	4-12	JLATD63/JLATE75
32	29	52	185/215	95/105	71	100/110	130	100	78	4-16	JLATD75/JLATE83
40	38	64	215/265	105/110	76	110/120	148	110	88	4-16	JLATD83/JLATE92
50	48	83	215/270	105/125	85	110/142	165	125	102	4-16	JLATD83/JLATE105
65	63.5	107	270/310	125/142	102	142/158	185	145	122	4-16	JLATD105/JLATE125
80	76	120	270/310	125/142	112	142/158	200	160	138	8-16	JLATD105/JLATE125
100	95	145	310/400	142/160	146	158/178	217	180	158	8-16	JLATD125/JLATE140

●Note: According to different valve torque, different air supply pressure and different actual working conditions, select the matched actuator, and its relevant dimensions change accordingly.

▼ Attachment selection

Solenoid valve	3/2, 5/2, single electric control and double electric control, please indicate when ordering
Filter pressure reducing valve	Stabilize and filter air source pressure
Limit switch	Remote feedback switch signal
Manual device	Open and close valve manually
Positioner	Input analog signal (4-20mA or 0-10V), adjust valve travel
Remark	The above accessories are not standard accessories, if you need them, please indicate when ordering, solenoid valve and limit switch are divided into explosion-proof type and non-explosion-proof type, please indicate the explosion-proof grade if you need.

▼ ELECTRIC OVERALL DIMENSIONS CHART-PN16(16bar)

DN	Overall Dimension						Connection Dimension				Actuator Model
	d	L	L1	L2	H1	H2	D	D1	D2	N-M	
15	14	36	165/320	150/220	48	135/270	88	65	45	4-12	JLA05/JLB10
20	19	40	165/320	150/220	53	135/270	98	75	58	4-12	JLA05/JLB10
25	24	44	165/320	150/220	59	135/270	105	85	68	4-12	JLA05/JLB10
32	29	52	165/320	150/220	71	135/270	130	100	78	4-16	JLA05/JLB10
40	38	64	165/320	150/220	76	135/270	148	110	88	4-16	JLA05/JLB10
50	48	83	190/320	170/220	85	140/270	165	125	102	4-16	JLA10/JLB15
65	63.5	107	190/355	170/250	102	140/275	185	145	122	4-16	JLA16/JLB20
80	76	120	270/375	220/290	112	170/315	200	160	138	8-16	JLA20/JLB30
100	95	145	270/375	220/290	146	170/315	217	180	158	8-16	JLA40/JLB40

●Note: According to different valve torque, different voltage and different actual working conditions, select the matched actuator, and its relevant dimensions change accordingly.

▼ Control mode selection

Standard switch type	Active switching quantity control, passive switching quantity feedback
Integral switch type	Passive switching quantity control, passive switching quantity feedback
Integral regulating type	Analog quantity control(4-20mA), Analog quantity feedback(4-20mA)
RS485 Field bus type	Support RS485 communication
Remark	Other type of control signal and feedback signal can be customized according to customers' requirements