

# V-TYPE BALL VALVE



JVL

JVL



Model: JL600-Q5/C4/Y/16/C/100/E2/B/W4/B5/B9

## Design Feature

- Fine grinding process, high fit, small return difference, V class leakage
- No cover design, no dead angle, not easy to accumulate, anti-lock, long service life
- Frequent operation, quick opening and closing, simple structure, compact volume
- Cutting edge and the flow channel form a fan-shaped structure to change the intercepting surface and accurately regulating function
- V-shaped spool, strong cutting force, suitable for fiber, particle and slurry and other fluids

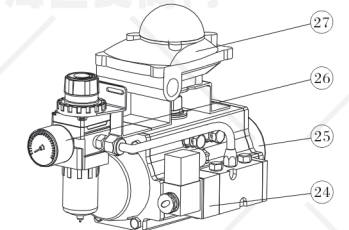
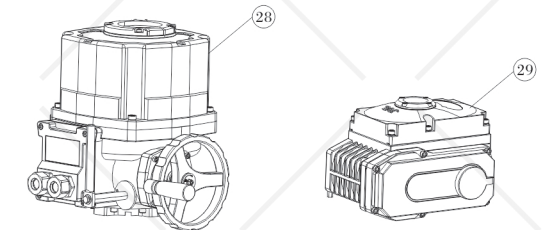
## Model Naming Method

|               |           |                   |        |            |     |     |      |   |          |           |                                |            |
|---------------|-----------|-------------------|--------|------------|-----|-----|------|---|----------|-----------|--------------------------------|------------|
| JL            | -600      | -Q5               | -C4    | -Y         | -16 | -C  | -100 | -E2   | -B       | -W4       | -B5                            | -B9        |
| Juliang brand | Pneumatic | V type ball valve | Flange | Hard alloy | PN  | WCB | DN   | Single acting normally closed regulating type | ExdIIBT4 | -29~425°C | Filter pressure reducing valve | Positioner |

## Technical Parameter

|                    |  |
|--------------------|--|
| DN                 | DN25~500mm   |
| Nominal pressure   | 1.0~2.5Mpa (other pressure standard, please indicate when ordering)                  |
| Body material      | WCB(C), SS304(P), SS316(R)   |
| Sealing material   | PTFE (F), Hard alloy (Y)   |
| Medium temp.       | W2:-20~150°C W3:-20~250°C W4:-29~425°C   |
| Connection mode    | Flange   |
| Pneumatic actuator | LAT series, JLA series, Imported actuator series                                     |
| Action mode        | Double acting series, Single acting normally closed, Single acting normally open     |
| Electric actuator  | JLA series, JLB series, Imported actuator series                                     |
| Control mode       | Standard switch type, Integral regulating type, Integral switch type, Field bus type |

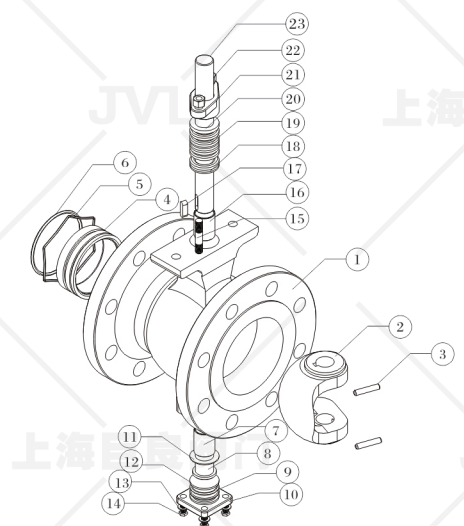
- Notes: 1. Sealing surface treatment process: Hard chrome plating, nitriding, surfacing Stellite, spraying tungsten carbide, spraying nickel-based alloy, spraying Stellite.  
2. Other special sealing materials or special temperature can be designed according to customer requirements



## Main component table

| No. | Part Name                | No. | Part Name                | No. | Part Name                         |
|-----|--------------------------|-----|--------------------------|-----|-----------------------------------|
| 1   | Valve body               | 11  | Ring washer              | 21  | Packing gland                     |
| 2   | Valve core               | 12  | Adjusting washer         | 22  | Nut                               |
| 3   | Cylindrical pin          | 13  | Flat washer              | 23  | Upper stem                        |
| 4   | Valve seat               | 14  | Bolt                     | 24  | Solenoid valve                    |
| 5   | Spring                   | 15  | Double end stud          | 25  | Pneumatic actuator                |
| 6   | O type ring              | 16  | Self-lubricating bearing | 26  | Filter pressure reducing valve    |
| 7   | Self-lubricating bearing | 17  | Flat key                 | 27  | Limit switch                      |
| 8   | Lower stem               | 18  | Lower packing            | 28  | Explosion-proof electric actuator |
| 9   | O type ring              | 19  | Mid packing              | 29  | Electric actuator                 |
| 10  | Back gland               | 20  | Upper packing            |     |                                   |

- Note: The materials of main parts and sealing ring can be designed and selected according to the actual working conditions or customers' requirements.



## Technical specification

| Design consideration      | GB  |                | API           |                            |
|---------------------------|---|----------------|---------------|----------------------------|
| Structure length          | Wafer type(Enterprise standard), Flange type (ISA S75.04-1995, IEC/DIN 534-3-2) |                |               |                            |
| Flange standard           | GB/T 9113.1-2010  | JB/T 79.1-1994 | HG 20592-2009 | ASME B 16.5 EN 1092-1:2001 |
| Test, Inspection standard | GB/T 4213-2007  |                |               |                            |

# V-TYPE BALL VALVE



JVL



Model: JL900-Q5/C7/Y/16/C/100/E2/B/W4/B5/B9

## Design Feature

- Fine grinding process, high fit, small return difference, V class leakage
- No cover design, no dead angle, not easy to accumulate, anti-lock, long service life
- Frequent operation, quick opening and closing, simple structure, compact volume
- Cutting edge and the flow channel form a fan-shaped structure to change the intercepting surface and accurately regulating function
- V-shaped spool, strong cutting force, suitable for fiber, particle and slurry and other fluids

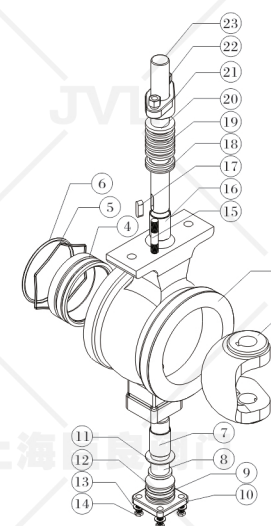
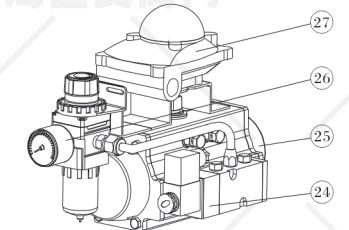
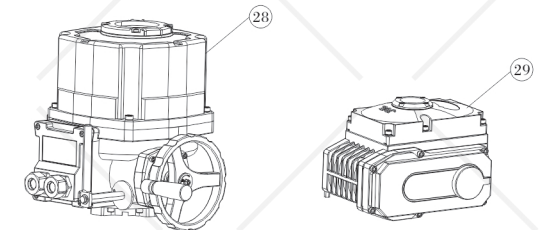
## Model Naming Method

|               |          |                   |       |            |     |     |      |   |            |           |                                |            |
|---------------|----------|-------------------|-------|------------|-----|-----|------|---|------------|-----------|--------------------------------|------------|
| JL            | -900     | -Q5               | -C7   | -Y         | -16 | -C  | -100 | -E2   | -B         | -W4       | -B5                            | -B9        |
| Juliang brand | Electric | V type ball valve | Wafer | Hard alloy | PN  | WCB | DN   | Single acting normally closed regulating type | Exd II BT4 | -29~425°C | Filter pressure reducing valve | Positioner |

## Technical Parameter

|                    |  |
|--------------------|--|
| DN                 | DN25~250mm   |
| Nominal pressure   | 1.0~2.5Mpa (other pressure standard, please indicate when ordering)                  |
| Body material      | WCB(C), SS304(P), SS316(R)   |
| Sealing material   | PTFE (F), Hard alloy (Y)   |
| Medium temp.       | W2:-20~150°C W3:-20~250°C W4:-29~425°C   |
| Connection mode    | Wafer  |
| Pneumatic actuator | JLAT series, JLA series, Imported actuator series                                    |
| Action mode        | Double acting, Single acting normally closed, Single acting normally open            |
| Electric actuator  | JLA series, JLB series, Imported actuator series                                     |
| Control mode       | Standard switch type, Integral regulating type, Integral switch type, Field bus type |

- Notes: 1. Sealing surface treatment process: Hard chrome plating, nitriding, surfacing Stellite, spraying tungsten carbide, spraying nickel-based alloy, spraying Stellite.  
2. Other special sealing materials or special temperature can be designed according to customer requirements



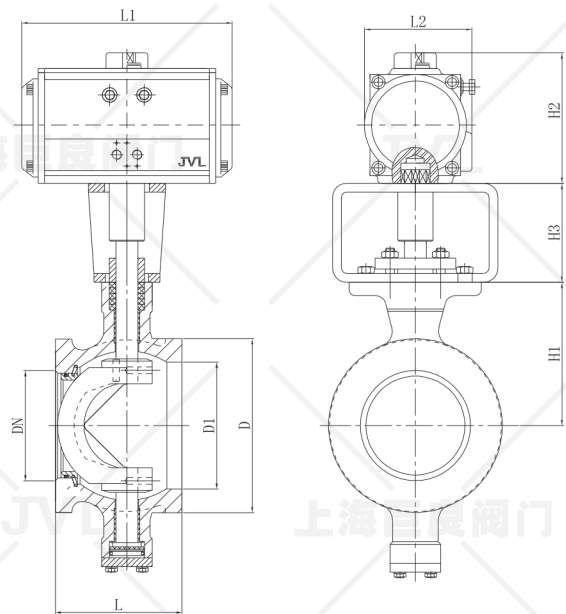
## Main component table

| No. | Part Name                | No. | Part Name                | No. | Part Name                         |
|-----|--------------------------|-----|--------------------------|-----|-----------------------------------|
| 1   | Valve body               | 11  | Ring washer              | 21  | Packing gland                     |
| 2   | Valve core               | 12  | Adjust washer            | 22  | Nut                               |
| 3   | Cylindrical pin          | 13  | Flat washer              | 23  | Upper stem                        |
| 4   | Valve seat               | 14  | Bolt                     | 24  | Solenoid valve                    |
| 5   | Spring                   | 15  | Double end stud          | 25  | Pneumatic actuator                |
| 6   | O type ring              | 16  | Self lubricating bearing | 26  | Filter pressure reducing valve    |
| 7   | Self-lubricating bearing | 17  | Flat key                 | 27  | Limit switch                      |
| 8   | Lower stem               | 18  | Lower packing            | 28  | Explosion-proof electric actuator |
| 9   | O type ring              | 19  | Mid packing              | 29  | Electric actuator                 |
| 10  | Back gland               | 20  | Upper packing            |     |                                   |

- Note: The materials of main parts and sealing ring can be designed and selected according to the actual working conditions or customers' requirements.

## Technical specification

| Design consideration      | GB  |                | API           |                            |
|---------------------------|---|----------------|---------------|----------------------------|
| Structure length          | Wafer type(Enterprise standard), Flange type (ISA S75.04-1995, IEC/DIN 534-3-2) |                |               |                            |
| Flange standard           | GB/T 9113.1-2010  | JB/T 79.1-1994 | HG 20592-2009 | ASME B 16.5 EN 1092-1:2001 |
| Test, Inspection standard | GB/T 4213-2007  |                |               |                            |



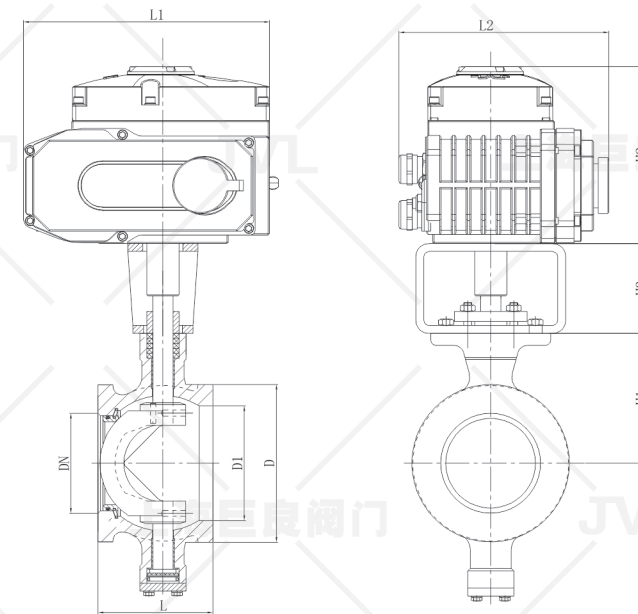
▼ PNEUMATIC OVERALL DIMENSIONS CHART-PN16(16bar)

| DN  | Overall Dimension |         |         |     |         | Connection Size |     | Actuator Model    |
|-----|-------------------|---------|---------|-----|---------|-----------------|-----|-------------------|
|     | L                 | L1      | L2      | H1  | H2      | D               | D1  |                   |
| 25  | 50                | 185/215 | 95/105  | 148 | 100/110 | 68              | 38  | JLATD75/JLATE83   |
| 32  | 60                | 215/265 | 105/110 | 153 | 110/120 | 76              | 45  | JLATD83/JLATE92   |
| 40  | 60                | 215/265 | 105/110 | 155 | 110/120 | 84              | 50  | JLATD83/JLATE92   |
| 50  | 75                | 265/270 | 110/125 | 165 | 120/142 | 100             | 62  | JLATD92/JLATE105  |
| 65  | 100               | 270/310 | 125/142 | 180 | 142/158 | 118             | 73  | JLATD105/JLATE125 |
| 80  | 100               | 310/400 | 142/160 | 193 | 158/178 | 132             | 90  | JLATD125/JLATE140 |
| 100 | 115               | 400/465 | 160/178 | 205 | 178/200 | 158             | 115 | JLATD140/JLATE160 |
| 125 | 129               | 465/550 | 178/210 | 225 | 200/235 | 184             | 134 | JLATD160/JLATE190 |
| 150 | 160               | 550/550 | 210/235 | 264 | 235/260 | 216             | 164 | JLATD190/JLATE210 |
| 200 | 200               | 550/646 | 235/258 | 295 | 260/325 | 268             | 206 | JLATD210/JLATE240 |
| 250 | 240               | 646/722 | 258/292 | 335 | 325/350 | 326             | 260 | JLATD240/JLATE270 |

●Note: According to different valve torque, different air supply pressure and different actual working conditions, select the matched actuator, and its relevant dimensions change accordingly.

▼ Attachment selection

|                                |   |
|--------------------------------|---|
| Solenoid valve                 | 3/2, 5/2, single electric control and double electric control, please indicate when ordering  |
| Filter pressure reducing valve | Stabilize and filter air source pressure  |
| Limit switch                   | Remote feedback switch signal   |
| Manual device                  | Open and close valve manually   |
| Positioner                     | Input analog signal (4-20mA or 0-10V), adjust valve travel  |
| Remark                         | The above accessories are not standard accessories, if you need them, please indicate when ordering, solenoid valve and limit switch are divided into explosion-proof type and non-explosion-proof type, please indicate the explosion-proof grade if you need. |



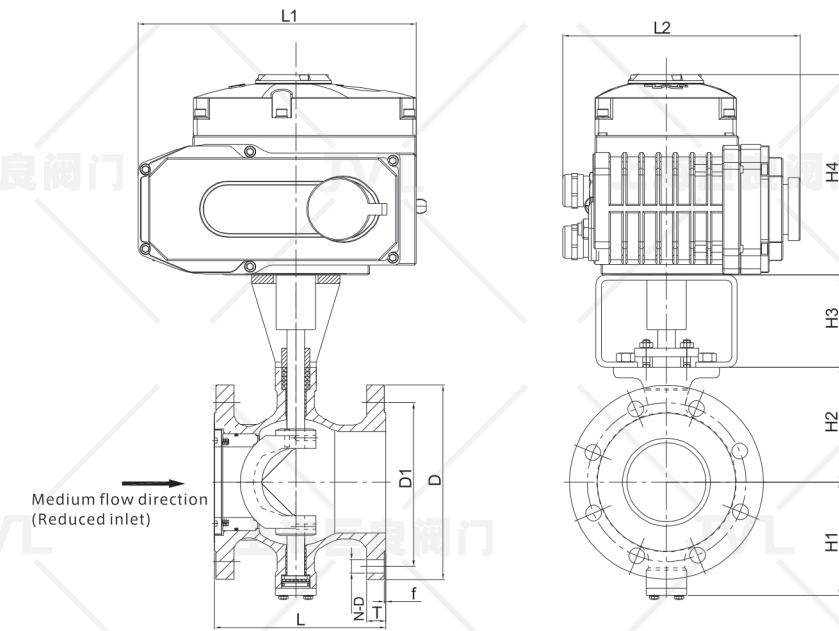
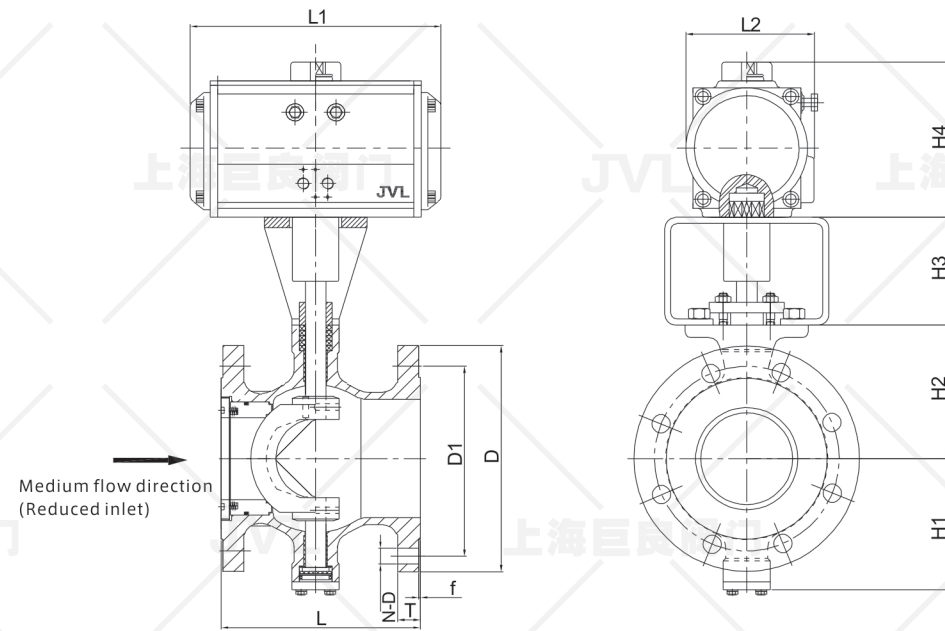
▼ ELECTRIC OVERALL DIMENSIONS CHART-PN16(16bar)

| DN  | Overall Dimension |         |         |     |         | Connection Size |     | Actuator Model |
|-----|-------------------|---------|---------|-----|---------|-----------------|-----|----------------|
|     | L                 | L1      | L2      | H1  | H2      | D               | D1  |                |
| 25  | 50                | 160/320 | 150/220 | 148 | 135/270 | 68              | 38  | JLA05/JLB10    |
| 32  | 60                | 160/320 | 150/220 | 153 | 135/270 | 76              | 45  | JLA05/JLB10    |
| 40  | 60                | 190/320 | 170/220 | 155 | 140/270 | 84              | 50  | JLA10/JLB15    |
| 50  | 75                | 190/320 | 170/220 | 165 | 140/270 | 100             | 62  | JLA10/JLB15    |
| 65  | 100               | 190/355 | 170/250 | 180 | 140/275 | 118             | 73  | JLA16/JLB20    |
| 80  | 100               | 270/375 | 220/290 | 193 | 170/315 | 132             | 90  | JLA20/JLB30    |
| 100 | 115               | 270/375 | 220/290 | 205 | 170/315 | 158             | 115 | JLA40/JLB40    |
| 125 | 129               | 270/375 | 220/290 | 225 | 170/315 | 184             | 134 | JLA60/JLB50    |
| 150 | 160               | 270/400 | 220/330 | 264 | 170/360 | 216             | 164 | JLA100/JLB100  |
| 200 | 200               | 270/400 | 220/330 | 295 | 170/360 | 268             | 206 | JLA200/JLB100  |
| 250 | 240               | 400     | 330     | 335 | 520     | 326             | 260 | JLB200         |

●Note: According to different valve torque, different voltage and different actual working conditions, select the matched actuator, and its relevant dimensions change accordingly.

▼ Control mode selection

|                          |   |
|--------------------------|---|
| Standard switch type     | Active switching quantity control, passive switching quantity feedback                                  |
| Integral switch type     | Passive switching quantity control, passive switching quantity feedback                                 |
| Integral regulating type | Analog quantity control(4-20mA), Analog quantity feedback(4-20mA)                                       |
| RS485 Field bus type     | Support RS485 communication   |
| Remark                   | Other type of control signal and feedback signal can be customized according to customers' requirements |



▼ PNEUMATIC OVERALL DIMENSIONS CHART-PN16(16bar)

| DN  | Overall Dimension |           |         |     |         | Connection Size |     |     |    |   |       | Actuator Model    |
|-----|-------------------|-----------|---------|-----|---------|-----------------|-----|-----|----|---|-------|-------------------|
|     | L                 | L1        | L2      | H1  | H2      | D               | D1  | D2  | T  | f | N-D   |                   |
| 25  | 102               | 185/215   | 95/105  | 148 | 100/110 | 115             | 85  | 38  | 16 | 2 | 4-14  | JLATD75/JLATE83   |
| 32  | 102               | 215/265   | 105/110 | 153 | 110/120 | 140             | 100 | 45  | 18 | 2 | 4-18  | JLATD83/JLATE92   |
| 40  | 114               | 215/265   | 105/110 | 155 | 100/120 | 150             | 110 | 50  | 18 | 2 | 4-18  | JLATD83/JLATE92   |
| 50  | 124               | 265/270   | 110/125 | 165 | 120/142 | 165             | 125 | 62  | 20 | 2 | 4-18  | JLATD92/JLATE105  |
| 65  | 145               | 270/310   | 125/142 | 180 | 142/158 | 185             | 145 | 73  | 20 | 2 | 8-18  | JLATD105/JLATE125 |
| 80  | 165               | 310/400   | 142/160 | 193 | 158/178 | 200             | 160 | 90  | 20 | 2 | 8-18  | JLATD125/JLATE140 |
| 100 | 194               | 400/465   | 160/178 | 205 | 178/200 | 220             | 180 | 115 | 22 | 2 | 8-18  | JLATD140/JLATE160 |
| 125 | 194               | 460/550   | 178/210 | 225 | 200/235 | 250             | 210 | 134 | 22 | 2 | 8-18  | JLATD160/JLATE190 |
| 150 | 229               | 550/550   | 210/235 | 264 | 235/260 | 285             | 240 | 164 | 24 | 2 | 8-22  | JLATD190/JLATE210 |
| 200 | 243               | 550/646   | 235/258 | 295 | 260/325 | 340             | 295 | 206 | 24 | 2 | 12-22 | JLATD210/JLATE240 |
| 250 | 297               | 646/722   | 258/292 | 335 | 325/350 | 405             | 355 | 260 | 26 | 2 | 12-26 | JLATD240/JLATE270 |
| 300 | 338               | 1495/1630 | 350/375 | 380 | 326/326 | 460             | 410 | 316 | 28 | 2 | 12-26 | JLAW20/JLAW25     |

●Note: According to different valve torque, different air supply pressure and different actual working conditions, select the matched actuator, and its relevant dimensions change accordingly.

▼ Attachment selection

|                                |   |
|--------------------------------|---|
| Solenoid valve                 | 3/2, 5/2, single electric control and double electric control, please indicate when ordering  |
| Filter pressure reducing valve | Stabilize and filter air source pressure  |
| Limit switch                   | Remote feedback switch signal   |
| Manual device                  | Open and close valve manually   |
| Positioner                     | Input analog signal (4-20mA or 0-10V), adjust valve travel  |
| Remark                         | The above accessories are not standard accessories, if you need them, please indicate when ordering, solenoid valve and limit switch are divided into explosion-proof type and non-explosion-proof type, please indicate the explosion-proof grade if you need. |

▼ ELECTRIC OVERALL DIMENSIONS CHART-PN16(16bar)

| DN  | Overall Dimension |         |         |     |         | Connection Size |     |     |    |   |       | Actuator Model |
|-----|-------------------|---------|---------|-----|---------|-----------------|-----|-----|----|---|-------|----------------|
|     | L                 | L1      | L2      | H1  | H2      | D               | D1  | D2  | T  | f | N-D   |                |
| 25  | 102               | 165/320 | 150/220 | 148 | 135/270 | 115             | 85  | 38  | 16 | 2 | 4-14  | JLA05/JLB10    |
| 32  | 102               | 165/320 | 150/220 | 153 | 135/270 | 140             | 100 | 45  | 18 | 2 | 4-18  | JLA05/JLB10    |
| 40  | 114               | 190/320 | 170/220 | 155 | 140/270 | 150             | 110 | 50  | 18 | 2 | 4-18  | JLA10/JLB15    |
| 50  | 124               | 190/320 | 170/220 | 165 | 140/270 | 165             | 125 | 62  | 20 | 2 | 4-18  | JLA10/JLB15    |
| 65  | 145               | 190/335 | 170/250 | 180 | 140/275 | 185             | 145 | 73  | 20 | 2 | 8-18  | JLA16/JLB20    |
| 80  | 165               | 270/375 | 220/290 | 193 | 170/315 | 200             | 160 | 90  | 20 | 2 | 8-18  | JLA20/JLB30    |
| 100 | 194               | 270/375 | 220/290 | 205 | 170/315 | 220             | 180 | 115 | 22 | 2 | 8-18  | JLA40/JLB40    |
| 125 | 194               | 270/375 | 220/290 | 225 | 170/315 | 250             | 210 | 134 | 22 | 2 | 8-18  | JLA60/JLB50    |
| 150 | 229               | 270/400 | 220/330 | 264 | 170/360 | 285             | 240 | 164 | 24 | 2 | 8-22  | JLA100/JLB100  |
| 200 | 243               | 400     | 330     | 295 | 520     | 340             | 295 | 206 | 24 | 2 | 12-22 | JLB200         |
| 250 | 297               | 400     | 330     | 335 | 520     | 405             | 355 | 260 | 26 | 2 | 12-26 | JLB200         |
| 300 | 338               | 400     | 330     | 380 | 520     | 460             | 410 | 316 | 28 | 2 | 12-26 | JLB200         |

●Note: According to different valve torque, different voltage and different actual working conditions, select the matched actuator, and its relevant dimensions change accordingly.

▼ Control mode selection

|                          |   |
|--------------------------|---|
| Standard switch type     | Active switching quantity control, passive switching quantity feedback                                  |
| Integral switch type     | Passive switching quantity control, passive switching quantity feedback                                 |
| Integral regulating type | Analog quantity control(4-20mA), Analog quantity feedback(4-20mA)                                       |
| RS485 Field bus type     | Support RS485 communication   |
| Remark                   | Other type of control signal and feedback signal can be customized according to customers' requirements |