



ZS EXPORTED MINIATURE STAINLESS STEEL SOLENOID VALVE

JVL THE CHOICEST GOODS/REPLACING IMPORTED GOODS/SKILLED TECHNOLOGY/WIDELY USED

Valve selection

- The direction of arrow on the valve body must be consistent with the flow of the medium, if there is bi-directional flow, may select electric valve or pneumatic valve.
- If contain impurity particles in the fluid, the strainer should be installed in front of the valve according to the particle size (the mesh number ≥ 80).
- The length of DC power cord should not be too long to avoid coil power loss and normal operation.
- Please give preference to the normally closed type in the design control plan.
- If you need explosion-proof solenoid valve, vacuum solenoid valve, long duration power on and special voltage requirements, please consult before selecting the model.

Model Naming Method

JLB	ZS	-1	-K	-RL	-J5	DN1	G1/8	
Special code	Model	Medium temp.	Function mode	Body material	Working coil selection	Nominal diameter	Connection mode	
B→BT4 Anti-explosion BZ→CT5 Anti-explosion No special blank		1:-20°C~80°C 2:-20°C~150°C 3:100°C~200°C 4:120°C~250°C	Blank→ Normally closed K→Normally open S→Manual device T-Regulating flow rate	Blank→CF8 or 304 RL→CF3M or 316L	Refer to data sheet	DN01→1mm DN02→2mm	G1/8~G1/2 NPT1/8~1/2	
							Other important parameters	

Technical parameter

DN	DN1~10mm
Connection mode	English system G internal thread, American system NPT internal thread (other can be customized);
Principle	Direct acting piston mode
Valve body material	SS304 , and SS316L(RL) can be customized
Sealing material	NBR, FKM, PTFE ,Others please consult
Suitable medium	Vapor, Liquid, Gas, Oil and Vacuum
Medium temperature	1.-20°C~80°C 2.-20°C~150°C 3.100°C~200°C 4.120°C~250°C Others please consult
Ambient temperature	Standard type:-20°C~60°C
Installation mode	Horizontal installation coil vertical upward (others please consult)
Protection level	Iron housing type: IP54 Plastic sealing type: IP65 Encapsulation type: IP65 Explosion-proof type: BT4:IP54 CT5/CT6:IP65

• Notes: Special conditions can be designed and manufactured according to the customer's actual conditions.

Power parameter

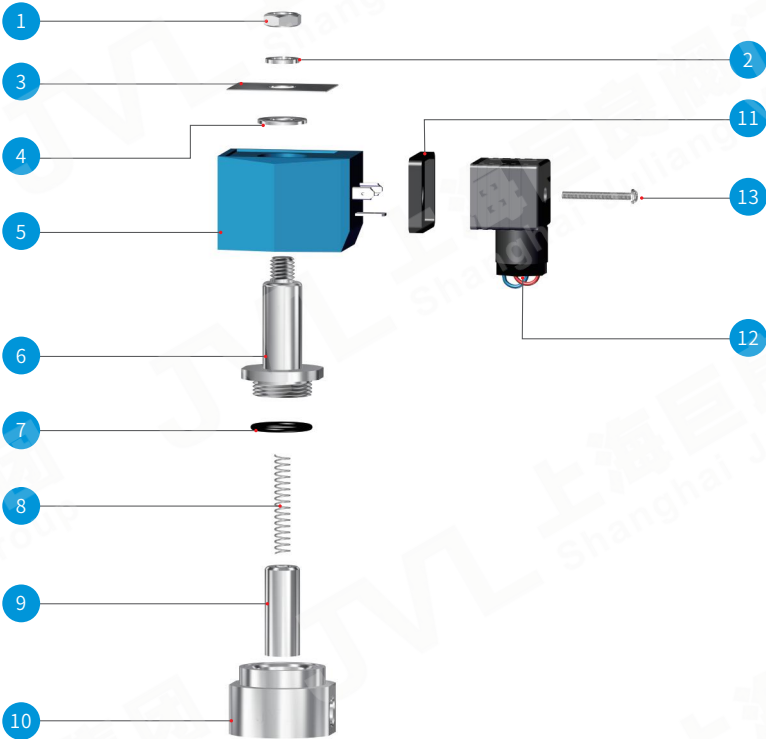
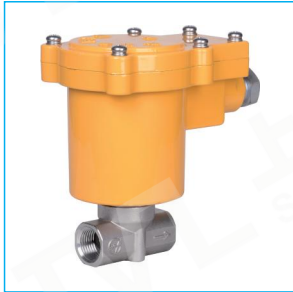
Supply Voltage	AC:220V DC:24V other voltages can be customized
Rated power	J4 AC26VA DC25W
	J5 AC20VA DC19W
	J6 AC30VA DC32W
	J7 AC22VA DC25W
	J8 AC40VA DC37W
Voltage deviation	±10%
Electrical connection	Standard type:DIN43650A/B, Standard junction box(M18x1.5) Anti-explosion type:Standard M14x1.5 or G1/2" inner thread Power cord of IP54 can be replaced, but IP65 can't



ZS EXPORTED MINIATURE STAINLESS STEEL SOLENOID VALVE

Application: medical equipment, food machinery, agricultural machinery, analytical instruments, humidifier, sulfur tester, water dispenser, bottle blowing machine, filling equipment, brewing equipment, generator set, environmental water treatment, industrial kiln, boiler burner, matching with welding and cutting products and automation control system of related industries.

SUPER LONG LIFETIME/MILITARY ACCESSORIES/ GOOD QUALITY/24-HOURS SERVICE



Part component description	
NO.	Name
1	M10 outer hex nut
2	D10 spring washer
3	Name plate
4	Flat washer
5	Electromagnetic coil
6	Bonnet component
7	Bonnet seal unit
8	Reset spring
9	Moving iron core component
10	Valve body
11	Protective pad for junction box
12	Junction box
13	M3 bolt

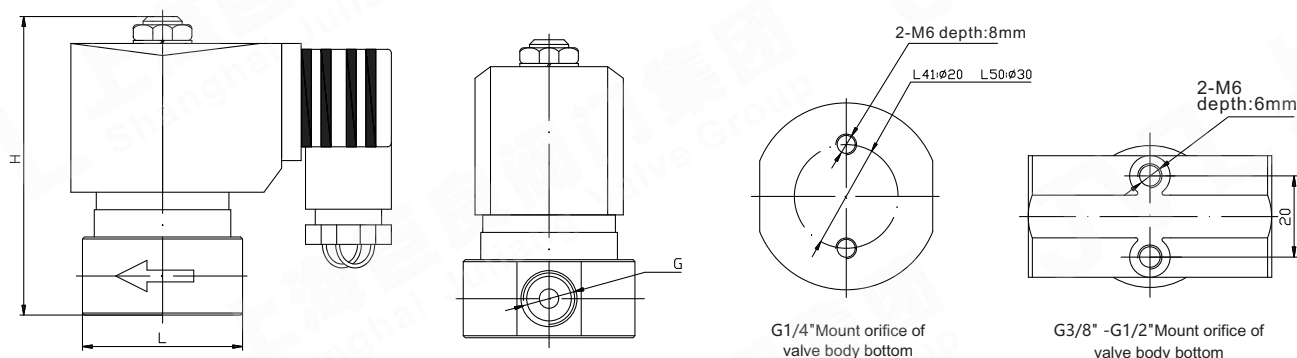
Product function selection

Symbol	Function mode	Content	Symbol	Function name	Content
Blank	Normally closed	Energized valve on, deenergized valve off	T	Regulating device	Regulating flow rate
K	Normally open	Energized valve off, deenergized valve on	ZK	Vacuum mode	Suitable for vacuum condition
X	Signal feedback	Passive contact signal feedback, reflect on-off state of valve.			
S	Hand device	Manual on-off valve			
M	Energy-saving device	Energy saving and reducing temperature rise.			
Notes	Anti-explosion level: Ex dbII BT4 Gb, Ex dbII CT5 Gb, Ex dbII CT6 Gb, Ex mb II T4 Gb special device related qualification please ask for from our sales				

ZS EXPORT MINIATURE STAINLESS STEEL SOLENOID VALVES

Application: medical equipment, food machinery, agricultural machinery, analytical instruments, humidifier, sulfur tester, water dispenser, bottle blowing machine, filling equipment, brewing equipment, generator set, environmental water treatment, industrial kiln, boiler burner, matching with welding and cutting products and automation control system of related industries.

JVL THE CHOICEST GOODS/REPLACING IMPORTED GOODS/SKILLED TECHNOLOGY/WIDELY USED



Normally closed standard product specifications

Type	Nominal diameter DN[mm]	Pipe thread [G]	J4 Differential pressure range[bar]		J5 Differential pressure range[bar]		J6 Differential pressure range[bar]		J7 Differential pressure range[bar]		J8 Differential pressure range[bar]	
			AC	DC	AC	DC	AC	DC	AC	DC	AC	DC
ZS01	1	G1/8"	-	-	0~40	0~35	-	-	0~50	0~45	-	-
ZS02	2	G1/8"~G1/4"	-	-	0~35	0~30	-	-	0~40	0~35	-	-
ZS03	3	G1/4"	-	-	0~16	0~16	-	-	0~25	0~25	-	-
ZS3.5	3.5	G1/4"	-	-	0~14	0~10	-	-	0~16	0~13	-	-
ZS05	5	G1/4"~G3/8"	-	-	0~10	0~6	-	-	0~12	0~10	-	-
ZS06	6	G1/4"	0~8	0~6	-	-	-	-	-	-	-	-
ZS09	9	G1/4"~G3/8"	-	-	0~1.2	0~0.5	0~5.5	0~5	0~2	0~1.5	0~7	0~4
ZS15	10	G3/8"~G1/2"	-	-	0~1	0~0.5	0~4	0~3.5	0~2	0~1.2	0~5	0~3

Normally closed standard product dimensions

Type	Nominal diameter DN[mm]	Pipe thread [G]	J4		J5		J6		J7		J8		Mount orifice size
			L	H	L	H	L	H	L	H	L	H	
ZS01	1	G1/8"	-	-	41	77	-	-	41	77	-	-	2-M6
ZS02	2	G1/8"	-	-	41	77	-	-	41	77	-	-	2-M6
ZS03	3	G1/4"	-	-	41	77	-	-	41	77	-	-	2-M6
ZS3.5	3.5	G1/4"	-	-	41	77	-	-	41	77	-	-	2-M6
ZS05	5	G1/4"	-	-	41	77	-	-	41	77	-	-	2-M6
		G3/8"	-	-	50	77	-	-	50	77	-	-	2-M6
ZS06	6	G1/4"~3/8"	41	91	-	-	-	-	-	-	-	-	2-M5
ZS09	9	G1/4"~3/8"	-	-	50	77	50	95	50	77	50	110	2-M6
ZS15	10	G3/8"~1/2"	-	-	60	86	60	103	60	86	60	120	2-M6

•Notes:

- The above technical data and installation dimensions are standard designs. If added functional options or pipeline design is strict, you can ask "Overall drawing" from our company. Other pressure grade or special technical requirements shall be subject to the appointment of contract and physical products.
- If the solenoid valve is used in explosion-proof conditions, please ask "explosion-proof solenoid valve" s "Overall drawing" from our company.