



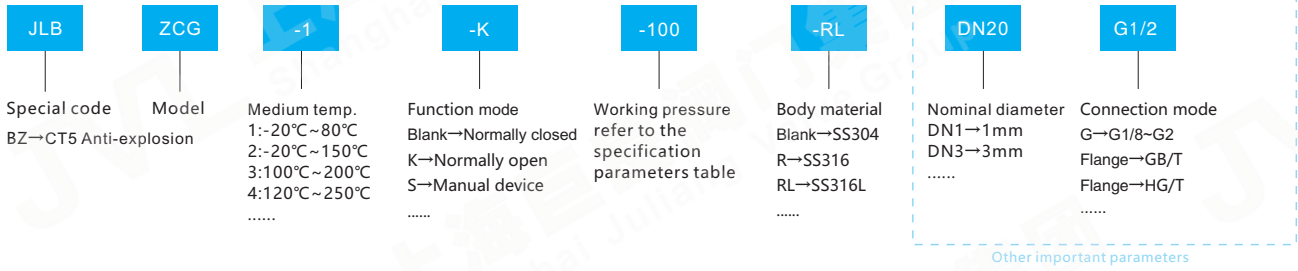
ZCG ULTRAHIGH-PRESSURE SOLENOID VALVE

ASHKENAZI HARDCOVER/WONDERFUL SKILLED/LONG LIFE/MILI-TARY

Valve selection

- The direction of arrow on the valve body must be consistent with the flow of the medium, if there is bi-directional flow ,may select electric valve or pneumatic valve.
- If contain impurity particles in the fluid, the strainer should be installed in front of the valve according to the particle size (the mesh number≥80).
- The length of DC power cord should not be too long to avoid coil power loss and normal operation.
- Please give preference to the normally closed type in the design control plan.
- If you need explosion-proof solenoid valve,long duration power on and special voltage requirements, please consult before selecting the model.

Model Naming Method



Technical parameter

DN	DN1~50mm
Connection mode	English system G Internal thread (Special connection modes such as thread, Flange and welding can be customized)
Principle	Pilot piston mode
Valve body material	SS304, SS304, SS316(-R), SS316L(-RL) can be customized
Sealing material	NBR,FKM, PTFE ,others please consult
Suitable medium	Liquid, Gas, Oil etc.(No granular impurity)
Medium temperature	1.-20°C~80°C 2.-20°C~150°C 3.100°C~200°C 4.120°C~250°C Others please consult
Ambient temperature	Standard type: -20°C~60°C
Installation mode	Horizontal installation ,coil vertical upward (others please consult)
Protection level	Iron housing type :IP54 Explosion-proof type:IP65

•Notes: Special conditions can be designed and manufactured according to the customer's actual conditions.

Power parameter

Supply Voltage	AC:220V DC:24V other voltages can be customized
Rated power	J11 AC24VA DC24W
	J12 AC40VA DC40W
Voltage deviation	±10%
Electrical connection	Standard type:DIN43650A/B, with standard junction box(M18x1.5) Anti-explosion type: standard G1/2 inner thread Power cord of IP54 can be replaced, but IP65 can't

Product function selection

Symbol	Function mode	content
Blank	Normally closed	Energized valve on, deenergized valve off
K	Normal open	Energized valve off, deenergized valve on
X	Signal device	Passive contact signal,reflect on-off state of valve
S	Manual device	Manual on-off valve
Notes	Anti-explosion level: Ex dbII BT4 Gb, Ex dbII CT5 Gb Special device related qualification please ask for from our sales	

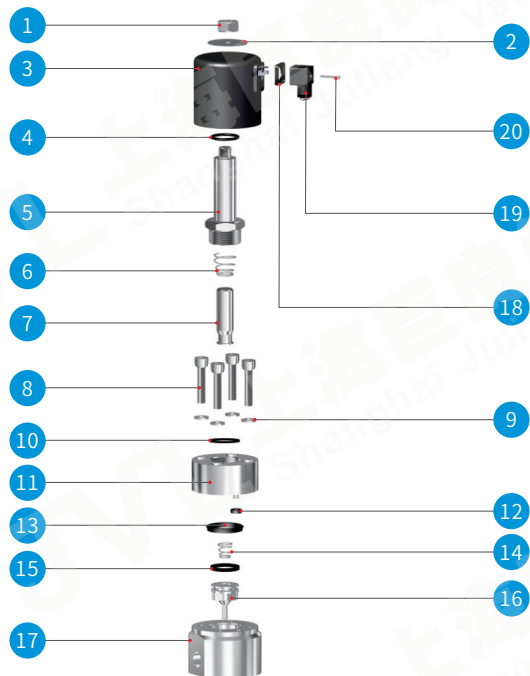


ULTRAHIGH-PRESSURE SOLENOID VALVE



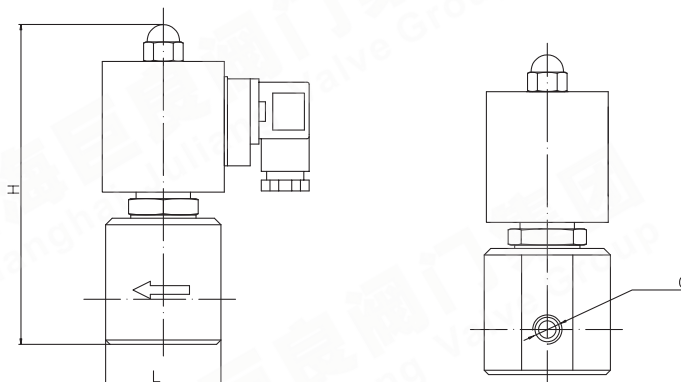
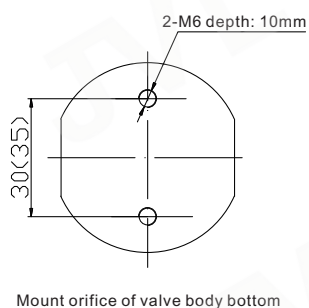
Product application: aerospace, national defense military industry, petrochemical industry, electric power equipment, steel, metallurgy, nuclear industry, canned equipment, air separation equipment, cleaning equipment, test equipment, test equipment, CNG refueling equipment, boiler burner, compressor, bottle blowing machine, industrial furnace, shipbuilding and other ancillary products and related industry automation control system

GOOD QUALITY/WIDELY USED/QUICK RESPONSE



Part component description

NO.	Name	NO.	Name
1	M10 locknut	11	Main bonnet
2	Name plate	12	Pilot hole seal
3	Electromagnetic coil	13	Main bonnet seal
4	Anti-shock spring washer	14	Reset spring of main valve
5	Pilot bonnet component	15	Elastic seal ring of main valve core
6	Reset spring	16	Main valve core component
7	Moving iron core component	17	Valve body
8	Main bonnet fastening bolt	18	Protective pad for junction box
9	Spring washer	19	Junction box
10	Pilot bonnet seal	20	M3 bolt



Normally closed standard product specifications & dimensions

Type	Nominal diameter DN[mm]	Pipe thread [G]	Differential pressure[bar]		Overall dimensions		Mount orifice size
			AC	DC	L	H	
ZCG01	01	G1/8"~1/4"	1~64	1~64	44	123	2-M5
ZCG03	03	G1/8"~1/4"	1~64	1~64	44	123	2-M5
ZCG05	05	G1/8"~1/4"	1~64	1~64	53	150	2-M5
ZCG06	06	G1/8"~1/4"	1~64	1~64	53	150	2-M5
ZCG08	08	G3/8"	1~64	1~64	53	150	2-M5
ZCG10	10	G3/8"	1~64	1~64	53	150	2-M5
ZCG15	15	G1/2"	1~64	1~64	70	140	-
ZCG20	20	G3/4"	1~64	1~64	85	155	-
ZCG25	25	G1"	1~64	1~64	95	160	-
ZCG32	32	G1-1/4"	1~64	1~64	115	170	-
ZCG40	40	G1-1/2"	1~64	1~64	130	185	-
ZCG50	50	G2"	1~64	1~64	145	200	-

The flanges in this series are welded on the basis of ultra-high pressure valve body according to the actual situation of the user. Please ask the salesman for the "outline size drawing" before purchase. This series can be customized for pressure classes of 64bar, 100bar, 200bar, 300bar, 400bar, 500bar, 600bar, 700bar, 800bar. The installation dimensions shall be subject to the actual drawings provided by the company.

- Notes: 1. The above technical data and installation dimensions are standard designs. If added functional options or pipeline design is strict, you can ask "Overall drawing" from our company. Other pressure grade or special technical requirements shall be subject to the appointment of contract and physical products.
- 2. If the solenoid valve is used in explosion-proof conditions, please ask "explosion-proof solenoid valve" s "Overall drawing" from our company.